

Installation Instruction

(Kia KX7 2017)

Precautions

- All pictures in this manual are for reference only. Pictures and objects may differ, but the installation method is the same.
- In order to facilitate your installation, please carefully read the product manual before installation; When installing, protect your car's surface and avoid scratching.
- Please check regularly if all accessories connected with the car are loose to ensure safety.

Installation Steps

Refer to the parts list and accessory drawings to check if the accessories are complete. After the product is installed, press the tailgate button for 3-5 seconds. You will hear a sound "DI——" and then loose your hand. Press the tailgate button again and close it. You will hear two sounds. Tail gate learning is finished.



1. Remove the trim panel as shown in the picture.



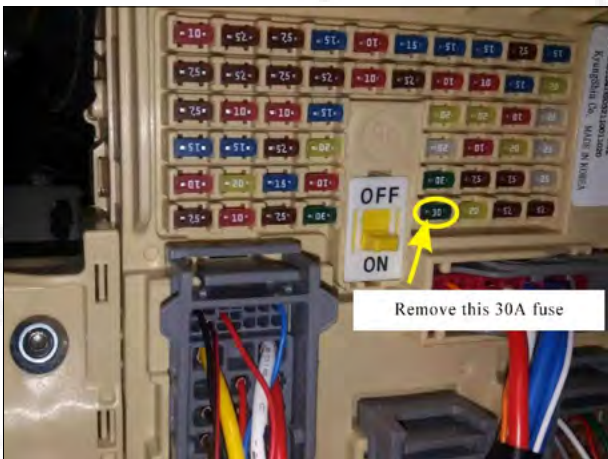
2. Remove the original car brace rod, and use the original car bracket to install our brace rods (As shown in the figure).



3. Brace Hall line passes through this reserved hole (Left and right steps are the same).



4. Hall line is routed to tailgate (Left and right steps are the same).



5. Remove the trim panel under the main driver's seat. And unplug the original 30A fuse.



6. Plug in our power plug.



7. Find the ground wire on the left side of the power supply (Shown in figure), connect the ground wire.



8. Remove the trim panel at the main driver's seat belt B-pillar and find the central control cable.



9. Central control cable connects the green cable.



10. Power cable and central control cable follow the direction of the yellow line arrow.



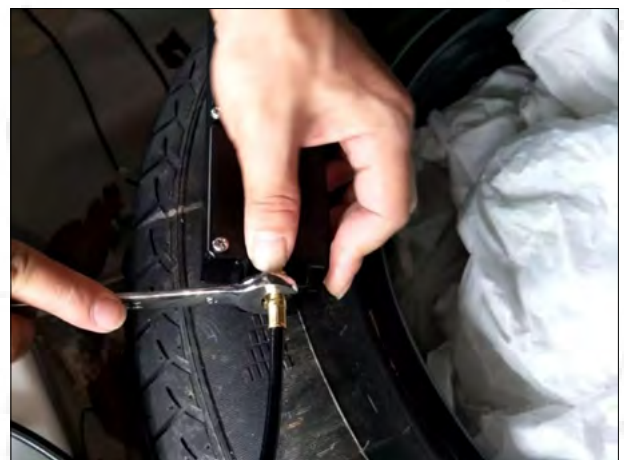
11. Remove the trim panel.



12. Remove the original car lock. Install our electric suction lock and fix it with our screws.



13. Clip the lock rope on the motor. Tighten the screws on both sides and fix it with our screws and gaskets



14. Then fix it with original motor screws and tighten the screws with a wrench.



15. Connect the socket of our electric suction cable with the motor socket.



16. Paste our 3M paster on the back of the motor.



17. Electric suction lock installation position (As shown in the figure).



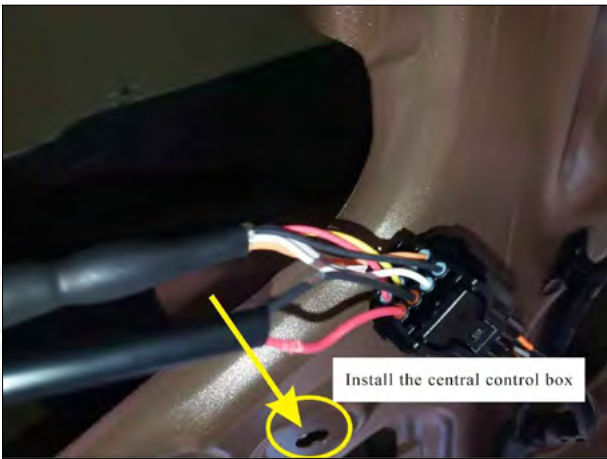
18. The electric suction cable is routed along the yellow line to the central control box of the tailgate cover.



19. Unplug the original car socket and insert our three-way socket (As shown in the figure).



20. According to the color, insert the Hall line socket, power cable socket and electric suction lock cable socket to the control box.



21. As shown in the figure, the central control box is installed here.

22. Install tailgate switch button (As shown in the figure).

After the installation is complete, you must set the tailgate learning. Make sure that the door can be opened and closed in place. (Raise the tailgate to ideal height. Then press the tailgate button for 3-5 seconds. You will hear a sound "DI——" and then loose your hand. Press the tailgate button again and close it. You will hear two sounds "DI DI". Tail gate learning is finished.) If you do not hear two sounds, learning is unsuccessful and you need to re-learn. If you can not close the door, use your hand to push the door to close when you are learning.

Disclaimer

Due to improper installation and improper use, caused the relevant issues and losses, these not include within our company 's warranty. Thanks for your purchasing our products. Please read the manual carefully before use and collect it for later reference.

Key Control Method

1. Press the original Key fobs three times to open and close the door.
2. Press the front switch button to open and close the door.

Setting Height

- 1.Raise the tailgate to the ideal height;
- 2.Press the tailgate switch for 3-5s;
- 3.When you hear a long sound "Di——", loose your hand and press the tailgate switch again to close the door.
- 4.When you hear two sounds "Di Di", Setting height is finished.

Note: Do not close the door with your hands after setting the ideal height.

Be sure to use our own tailgate switch.

Fault Solution

The original key fob does not work	Check if the yellow central control line is connected.
Not working after installation	1.Check if the positive power supply is connected with 12V-16V. 2.Check if the power fuse is inserted. 3.Check if the ground wire is connected.
Closing the tailgate not in place The tailgate can only open to half	1.Check if the left and right bracket are installed reversed. 2.Check if the control box wire is inserted. 3.Check if the brackets are fixed with our screws. 4.There are two rubbers on the left and right sides of the original tailgate cover. Check if they are loose and need to be tightened.



All rights reserved.